

Softec I



Softec I: Quality Meets Value

- » Single-piece acrylic
- » Proven C loop design
- » Always right-way design
- » Uniplanar bi-convex

**LENS[®]
TEC** 

Softec I Technical Specifications

Optic Size	5.75 mm
Optic Type	Equiconvex
Length	12.00 mm
Haptic Style	Modified C
Angulation	0 Degrees
Positioning Holes	0
Construction	1 Piece
Optic Material	Acrylic (26%WaterContent)
A/C Depth	5.22 mm

Constants (Optical Interferometry):*

Haigis[†]	a0=0.92 a1=0.40 a2=0.10
SRK/T	A = 118.43
Holladay1	sf = 1.47
Hoffer Q	pACD = 5.22

[†]For Haigis see: <http://ocusoft.de/ulib>.

*i.e. Using IOL Master, LENSTAR Optical Biometers

Diopter Steps

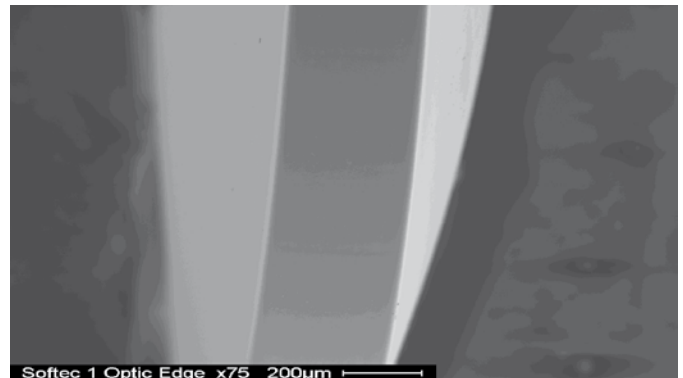
Whole - US Only	+5.00 to +36.00
Whole	-5.00 to +36.00
Half	+10.50 to +29.50

Softec I: Quality Meets Value

The Softec I is a C-Loop, one-piece hydrophilic acrylic with a unilinar design and equal biconvex spherical optic with square edge technology that allows surgeons to implant the lens whether or not it is right-side up.



360-Degree Square Edge Technology



Proven quality - FDA approved

Lenstec is one of eight companies in the world approved by FDA (Food and Drug Administration) to sell intraocular lenses in the U.S. market. All products have CE certificate, are approved by BSI (British Standards Institute) and are ISO quality system certified.

World Headquarters

Lenstec, Inc.
1765 Commerce Ave. N.
St. Petersburg, FL 33716
USA

Tel: 727-571-2272
Fax: 727-571-1792
Email: lenstec@lenstec.com

Lenstec Barbados

Lenstec Barbados Inc.
Airport Commercial Centre
Pilgrim Road, Christ Church
BARBADOS BB17092

Tel: 246-420-6795
Fax: 246-420-6797
Email: lenstecbarbados@lenstec.com

Lenstec UK

Lenstec Barbados Inc.
Lenstec House
Unit 8, Mariner Court
Calder Park, Wakefield
West Yorkshire WF4 3FL
England

Tel: +44 (0)1924 382 678
Fax: +44 (0)1924 850 454
Email: lenstecuk@lenstec.com